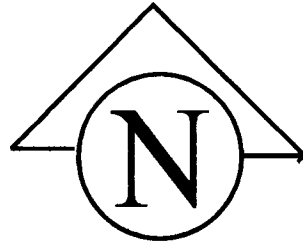


State of Wyoming Corner Record

(In compliance with the *CORNER PERPETUATION AND FILING ACT*, Wyoming Statutes, 1977, Section 36-11-101, et. seq., and the rules and Regulations of the Board of Registration for Professional Engineers and Professional Land Surveyors).

Reverse side of this form may be used if more space is needed.

Record of original survey and citation of source of historical information (if corner is lost or obliterated). Description of corner monumentation evidence found and/or monument and accessories established to perpetuate the location of this corner. Sketch of relative location of monument, accessories, and reference points with course and distance to adjacent corner(s) (if determined in this survey). Method and rationale for reestablishment of lost or obliterated corner.

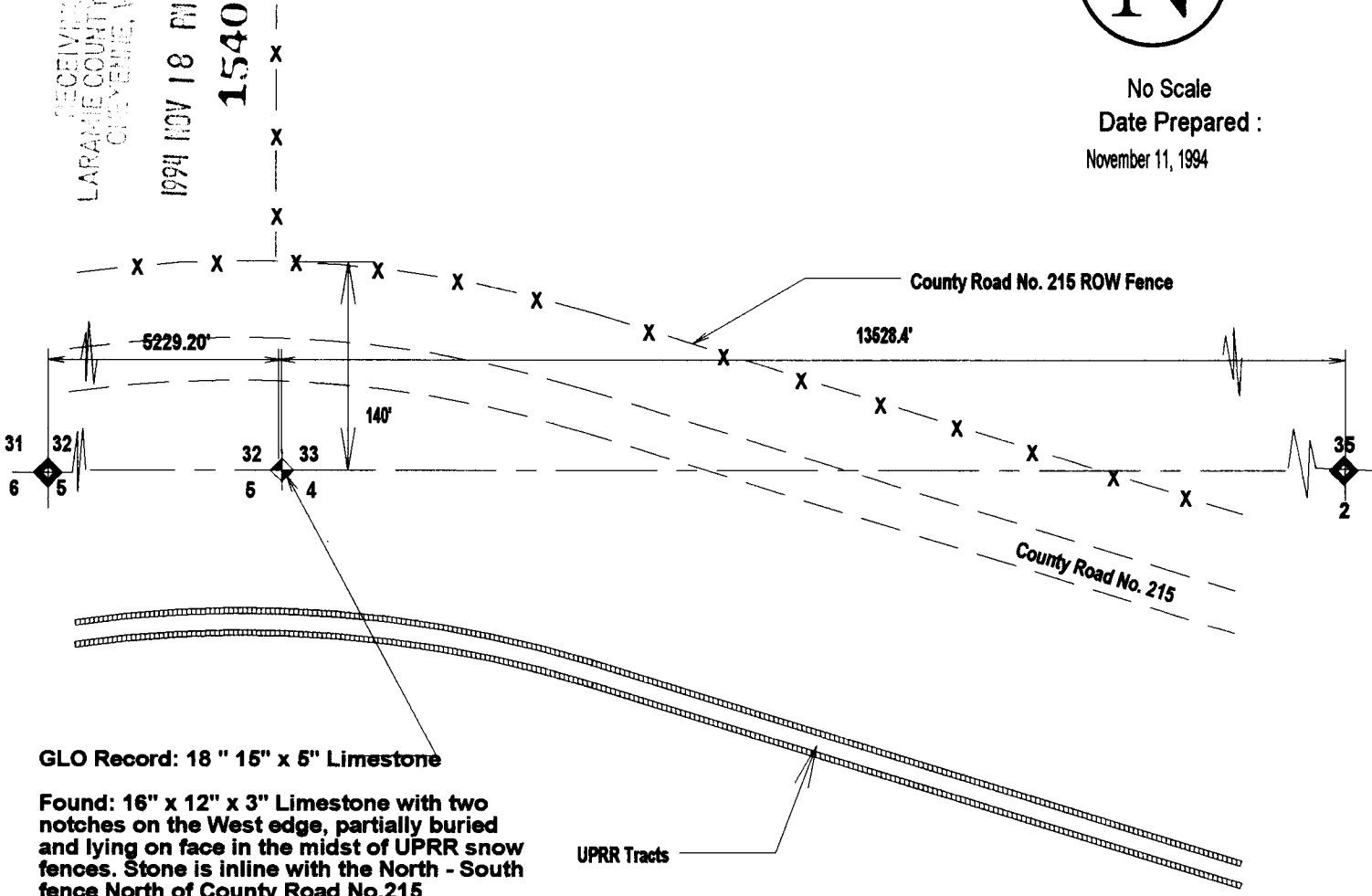


No Scale
Date Prepared :
November 11, 1994

RECEIVED
LARAMIE COUNTY CLERK
CHEYENNE, WY

1994 NOV 18 PM 4: 27

154044



GLO Record: 18 " 15" x 5" Limestone

Found: 16" x 12" x 3" Limestone with two notches on the West edge, partially buried and lying on face in the midst of UPRR snow fences. Stone is inline with the North - South fence North of County Road No.215

Set: Reset stone to proper orientation and placed 5/8" x 2' Rebar with Aluminum Cap inscribed S.D.Dawson - Wy. RLS No. 555 along side stone as witness monument.

Date of Field Work 5-28-94

Office Reference J-S Ranch Subdivision

Firm / Agency, Address

Cornerstone Surveying Company

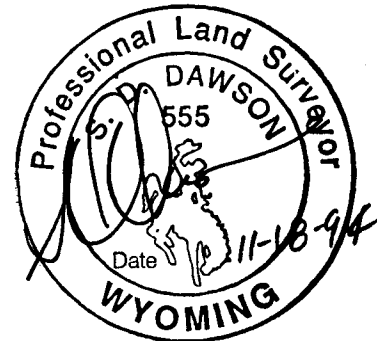
4005 Snyder Avenue

Cheyenne, Wyoming

Telephone Number 307 - 637 - 6958

This corner record was prepared by me or under my direction and supervision.

SEAL & SIGNATURE



CROSS INDEX DIAGRAM

	1	2	3	4	5	6	7	8	9	10	11	12	13	14	15	16	17	18	19	20	21	22	23	24	25	
A																										A
B																										B
C																										C
D																										D
E																										E
F																										F
G																										G
H																										H
J																										J
K																										K
L																										L
M																										M
N																										N
O																										O
P																										P
Q																										Q
R																										R
S																										S
T																										T
U																										U
V																										V
W																										W
X																										X
Y																										Y
Z																										Z

Corner Name NE Corner Section 5

Section 5 14T 64R 6th

P.M. Cross Index No. A9

SBRPEPLS/PLSW: March 1994

BOOK 1388

0296